

Information for Children and Young People

DON'T STAND BY AND WATCH BULLYING



Taking action together

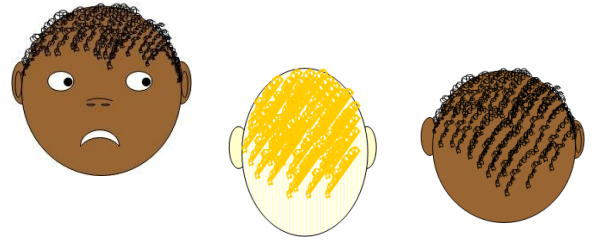
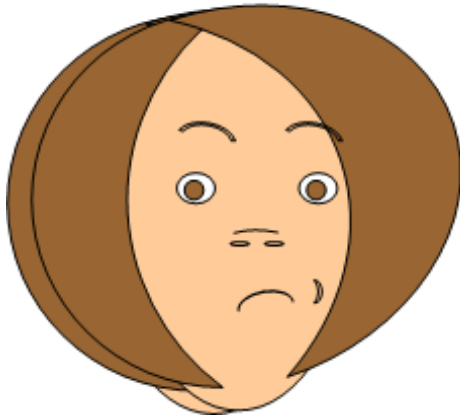


Safer, cleaner, ambitious
Nottingham
A city we're all proud of

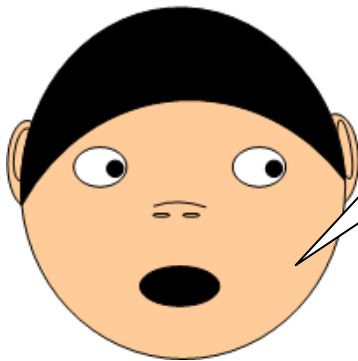


Nottingham
City Council

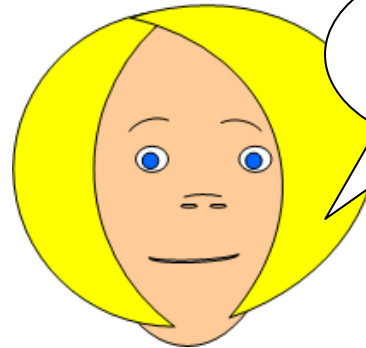
DON'T STAND BY AND WATCH BULLYING



Alice felt very uncomfortable when she saw Ali being bullied in the school playground.



It's only a bit of fun



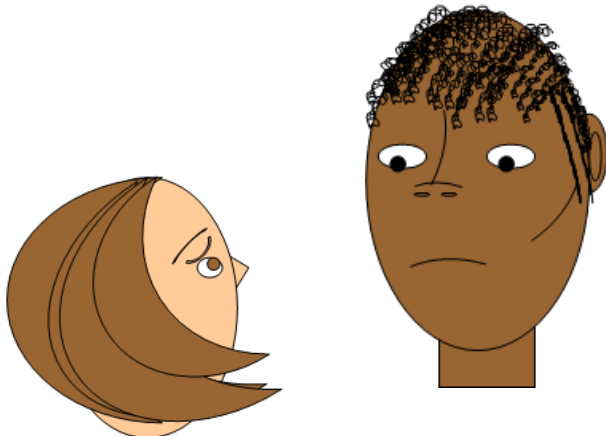
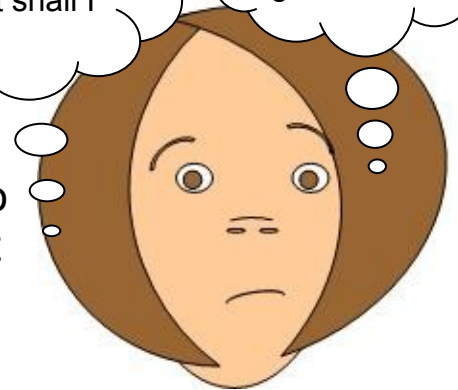
Ignore it and it will go away

Alice thought that if she didn't do or say anything the bully would think it is OK to bully.

She knew her school said it was important to be kind and respect each other, so she went to tell a teacher straight away.

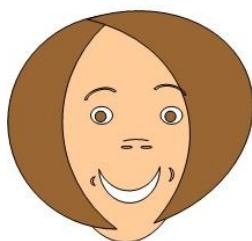
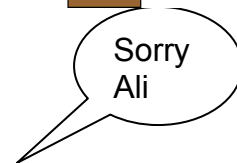
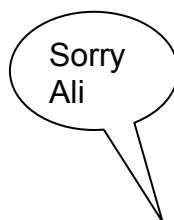
What shall I do?

Shall I get involved, or ignore it?



The teacher thanked Alice and said he would deal with the bullies in the playground.

The bullies said they were sorry to Ali. Everyone is friends now.



Alice and Ali are friends too. Alice sits with Ali at lunchtimes and talks to him so he knows he is not alone.

The teacher said to Ali that if anyone tried to bully him again, he should:

- Tell someone he trusts
- Stand tall
- Use eye contact and tell them to go away
- Ignore what they say
- Don't get angry or hit them
- Walk away confidently
- Act as though he doesn't care what they say or do

Ali felt much better knowing his school took action against bullying behaviour together.



HELPFUL CONTACTS

Childline

0800 1111

Childline is a free 24 hour helpline for children and young people in the UK
www.childline.org.uk

Kidscape

www.kidscape.org.uk

Beatbullying

Charity which works with schools and young people to tackle bullying.
<http://www.beatbullying.org/>

Bullying.co.uk

Support for children and young people
www.bullying.co.uk

Anti-Bullying Alliance

www.anti-bullyingalliance.org.uk/

November 2010

Community Educational Psychology Service, Anti-Bullying Support Team,
Directorate of Children and Families, Nottingham City Council
Glenbrook Management Centre, Wigman Road, Bilborough,
Nottingham, NG8 4PD

Tel: 0115 91 58902
Fax: 0115 91 58920

Email: liz.cottell@nottinghamcity.gov.uk